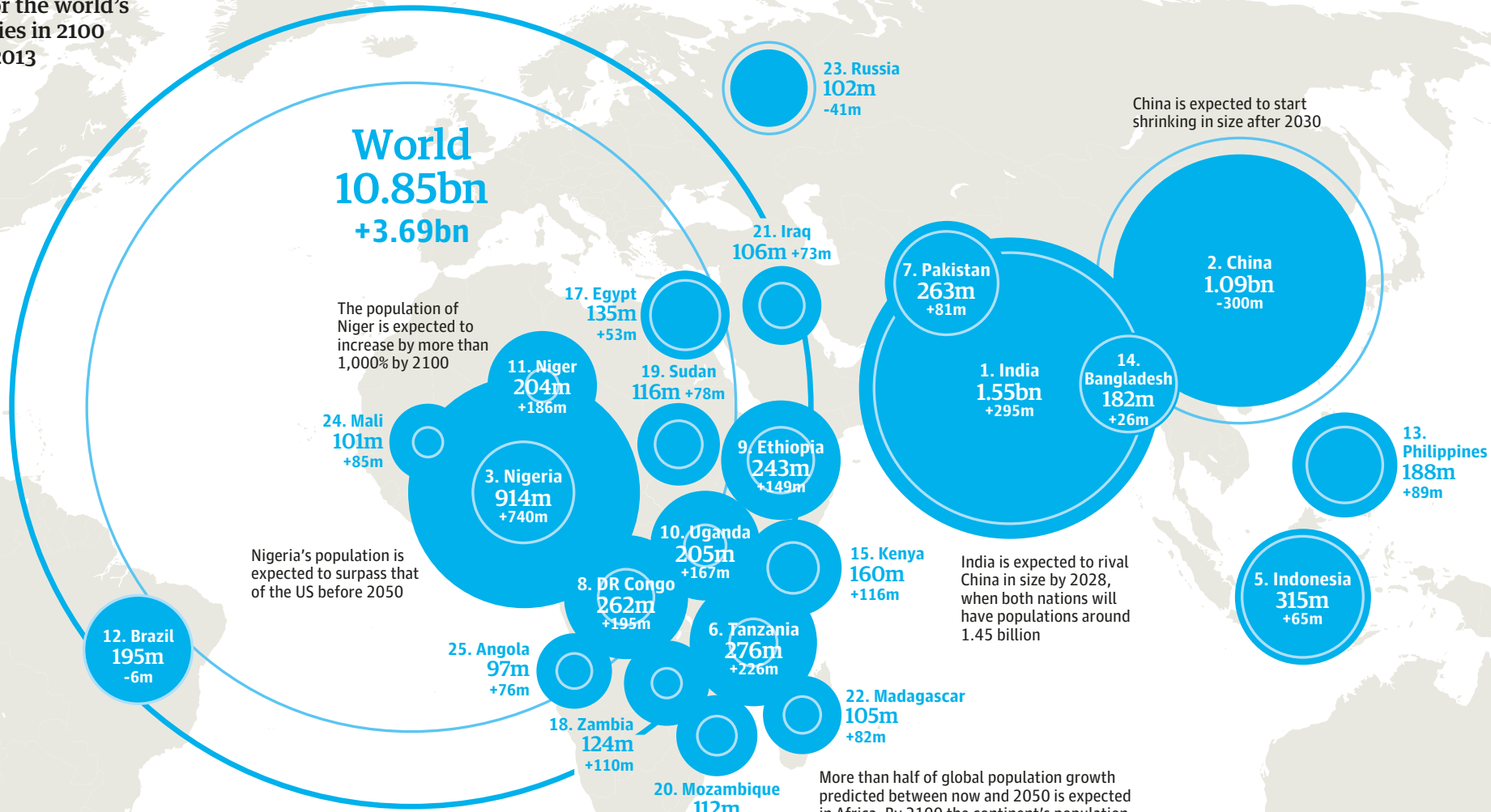
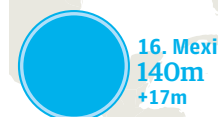
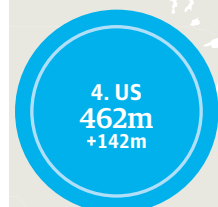


# Major populations in 2100

Estimated populations for the world's 25 most populous countries in 2100 showing increases from 2013

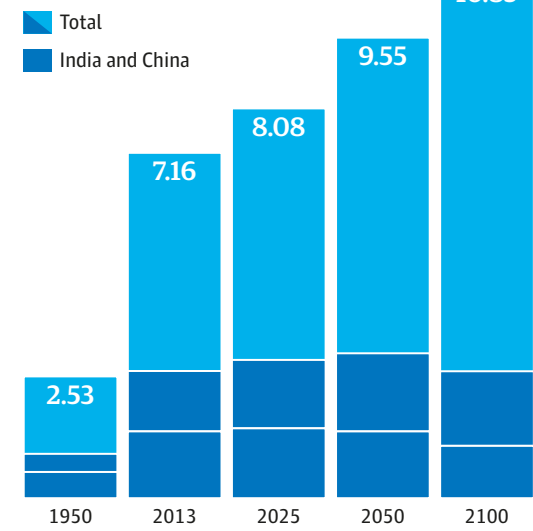
○ 2013 ● 2100



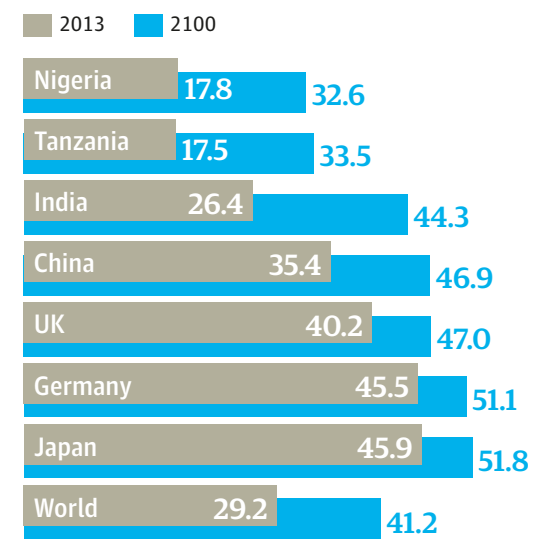
SOURCE: UN  
Figures are based on the UN's 'medium-variant' projections, which assume a substantial drop in the number of children born per woman in many of the countries with high fertility rates

GRAPHIC: PAUL SCRUTON

## Global population in billions



## Average age of selected populations



SOURCE: UN